

Election Of 2011 BAHS Board Of Directors



Front row: Joe Collins, Nancy Fredenburg, Sue Garcia, Marieanna Bair, Mindy Kinsey, Tammy Sexton, Jim Vichich. Back row: Tom Reinke, Dick Weaire, Dave Ball, Larry Lawrence

On November 21, the BAHS held our 29th annual membership meeting at Lyon School. In attendance were our current board and many other members.

The afternoon started with the wonderful smells of hot food circulating around the room as the tasty potluck luncheon commenced. This sit-down time allowed old friends to exchange pleasant conversations.

The business meeting, which included reports by the officers and directors, followed the luncheon. Elections of the 2011 Board of Directors concluded the meeting.

The historical society had a very positive year with much action on community-based projects. Thanks are given to the 2010 Officers and Board

of Directors for their most generous gift—the gift of time and energy! The Brighton community is fortunate to have an active historical society, which is due to the dedication of active members such as these. Their love of this wonderful community and its rich history is the source of their passion.

The 2011 Board of Directors has grown by four members over our previous year. I am very grateful to our new board members, Joe Collins, Nancy Fredenburg, Tammy Sexton and Dick Weaire, for volunteering to serve on the board this coming year.

A personal thank you to Jim Miller from the 2010 board who resigned in mid-year due to graduate school and job requirements.

2011 Board of Directors:

- President: Jim Vichich
- Vice-Pres: Marieanna Bair
- Treasurer: Mindy Kinsey
- Secretary: Sue Garcia

Directors:

- Dave Ball
- Joe Collins
- Nancy Fredenburg
- Larry Lawrence
- Tom Reinke
- Dick Weaire

- Jim Vichich



Lyon School Energy Savings

A significant investment to reduce energy has been made at Lyon School. The ceilings over the school, museum and archive rooms had 18 inches of blown fiberglass insulation installed.

The archive room, which has three exterior block walls with no insulation, received 2 inches of rigid foam insulation on the exterior and new cedar clapboard siding installed to match the rest of the building.

Under the schoolroom, the old stone and mortar foundation had many gaps. The entire foundation area was tuck-pointed to seal the crawl space.



Happy Holidays to each and all from your friends in the BAHS Board of Directors.

Special points of interest:

ICE HARVESTING USED TO BE A MAJOR WINTER INDUSTRY IN THIS AREA. LEARN MORE IN THIS MONTH'S HISTORICAL PERSPECTIVE ARTICLE.

SEE PAGE 4

WE HAVE MANY GREAT GIFT IDEAS IN OUR GIFT SHOP. ALL PROCEEDS HELP SUPPORT OUR PROJECTS AND GENERAL EXPENSES.

SEE PAGE 2

The term "Michigander" was first used in an 1848 political stump speech and meant as an insult. This pejorative nickname was given to Michigan native and presidential candidate, Lewis Cass, to make him sound foolish like a goose. The speaker in question was Abraham Lincoln.

Inside this issue:

RECENT AND FUTURE HAPPENINGS	2
RECOGNITION AND THANKS	2
BAHS GIFT SHOP	3
BAHS LEADERSHIP	3
MORE ABOUT BAHS	3
CONTACT BAHS	3
HISTORICAL PERSPECTIVE	4

Recent and Future Happenings

Dates to Remember - December 2010

Dec 1, 2, 5, 8, 9, 12, 15, 16, 19, 22, 23:
5pm-8pm

BAHS hosts at CoBACH Center

Dec 2, 9, 16, 23: 9am-4pm

Archiving/Open House at Lyon School

Dec 12: 1pm-4pm

Santa Visits Lyon School and Open House. Chance for photo with Santa & Mrs. Claus in 1800's schoolhouse. Crafts for kids to make and take. No charge for event.

Dec 22:

No BAHS Board Meeting; Cancelled this month for the holidays.

Dec 24-Jan 1:

CoBACH CLOSED for holidays.

Area Organizations

Dec 4: 2pm-4pm

South Lyon Historical Society. "Cool Yule" - visit 1900 village. (248) 437-9929.

Dec 4: 10am-4pm, Dec 5: 12nn-4pm

Waterloo Area Historical Society. Christmas on the Farm. www.waterloofarmmuseum.org

Dec 5: 12nn-4pm

Cobblestone Farm Association, 2781 Packard Road, Ann Arbor. (734) 794-7120.

Dec 11: 1pm-5pm, Dec 12: 1pm-4pm

Saline Area Historical Society. Christmas on the Farm. www.salinehist.org

Membership Renewal

A successful organization makes a difference in a community. The Brighton Area Historical Society can be that organization.

Members help define the difference the BAHS makes in this community. One person, two people, or five can make a difference. It stands to reason that ten, twenty, fifty people can make a more substantial difference.

Renew your membership, or become a member, and be recognized as one who is making a difference. Consider becoming one known to have preserved, saved, maintained the community's heritage and improved its quality of life. Join the BAHS.

Help Needed

We need your help! If any of the following items are applicable to you, please contact us.

- People recording their memories for the history notes in Trail Tales.
- People supporting the various projects, such as volunteering three

hours (or more) a month at CoBACH, preparing publicity for events, scanning and organizing documents and photos.

- Donations to cover expenses, maintenance and utilities at Lyon School.
- Photos of earlier residents, town and country landscapes, organizations, etc., to copy for more complete archives.
- Help with exhibits at CoBACH.

Ice Harvesting Program

From Jan 21 to Feb 26, a special exhibit will be open at CoBACH. *Ice Harvesting* will highlight the extensive tools of the trade. Old photos will show the rugged men who cut the ice with handsaws and the horses later used to pull the large ice cutting saws. Videos will show actual footage of these jobs being done. Actual equipment used in this trade will be on display. Ice harvesting was done on local lakes around the Brighton area before refrigerators were invented. The name icebox, as used by your parents or grandparents, will gain a new appreciation for you. No charge for the event.

Gift Idea Trouble

Are you trying to find the perfect gift for the person who has everything? A donation to the BAHS in their honor would be appreciated. It would also make an appropriate memorial.

Thanks and Recognition

Thanks to...

The BAHS recognizes the following people for volunteering their time.

- Bert Bair, Judith Coebly, June Kimble and Sue Swarski for their help in mailing the November issue of Trail Tales.
- Hartland Stagecoach Questers for a donation honoring Judith Coebly for a program she presented.
- Tom & Bonnie Riutta for their donation to Lyon School project with their dues.
- Irene Teasley for her donation to BAHS projects.
- Josephine Hodge Piehutaski for a copy of "Honor Roll of Livingston County" WWI.

Memberships

We would like to thank the following members for their annual memberships:

Family

- Cheryl Chidester
- Carolina DeLuca
- Phil & Peggy Gage (Sault Ste Marie)
- Tom & Bonnie Riutta
- Dan Schmidt
- Lois Tobias (NE)
- Alice Wyland
- Bernon Young (FL)

Student

- Caroline Martin*
- Tommy Hill*

2010 Business / Professional Members

The support of our professional members is deeply appreciated. We encourage you to support these local businesses.

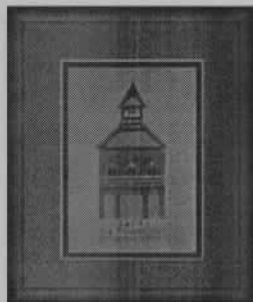
- Advance Craft Home Builders, Inc.
- Archer-Huntley Financial Services**
- Bagger Dave's Restaurant
- Joe Agius/Burroughs Tavern
- Lawrence Autobody**
- Masonic Lodge #247**
- Michigan Commerce Bank*
- Patrick Financial Group, LLS**
- Promess**
- The Engravers Journal
- Yum Yum Tree

* Welcome new members

** Special thanks to these Life Members

Holiday Gift Ideas

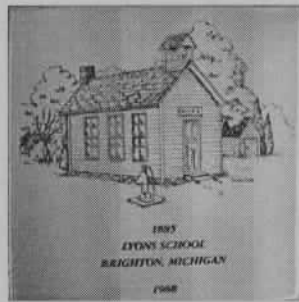
We have many great items for sale that would make excellent holiday gifts. This includes home décor (pewter items, afghans and pillows, decorative ceramic tiles, etc.), postcards, craft items, and the like. Presented below are just a few. To see our full gift shop offering, please contact us or visit our web site.



The Old Town Hall graces this framed needlepoint that would look good in any home décor.



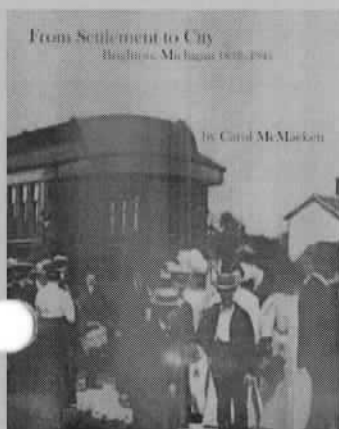
The beautiful afghans feature many local historical sites. Available in red, green and blue.



There are twelve different ceramic tiles, each with a different historical building.



This pewter plate contains a sunken relief impression of the Old Town Hall.

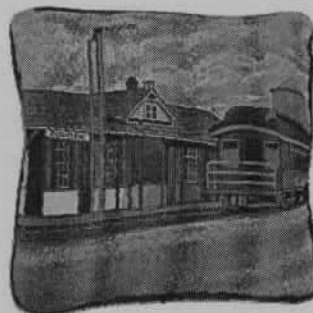


**From Settlement to City
Brighton, Michigan 1832 - 1945**
by Carol McMacken
450+ pages; Over 300 pictures
\$65.00

Description: This large volume hardcover book contains a beautifully detailed history of Brighton from its earliest days until the mid-1940s. It contains over 300 pictures and illustrations and is a must for any book collection on Michigan and its rich history.



The BAHS tote bag is both sturdy and attractive, and features the Old Town Hall.



Our throw pillow is very colorful and contains a scene of the old train station.

BAHS Leadership

President

Jim Vichich

Vice President

Marieanna Bair

Secretary

Thomas Reinke

Treasurer

Mindy Kinsey

Directors

Dave Ball

Sue Garcia

Larry Lawrence

Education Liaison

Judith Coebly

Sue Skwarski

Trail Tales Editor

Dave Ball

CoBACH Display Coordinator

Open: Volunteer Needed

The BAHS is a 501(c)(3) non-profit organization. Help us out while also helping yourself with a tax-deductible contribution.

The BAHS accepts monetary support and donations of historical artifacts. Please consider supporting us with your generosity.

BAHS: How to Contact Us or Find Us

If you would like to contact us, please use the following options:

E-Mail:

info@brightonareahistorical.com

Phone:

(810) 250-7276

US Mail:

Brighton Area Historical Society

P. O. Box 481

Brighton, MI 48116-0481

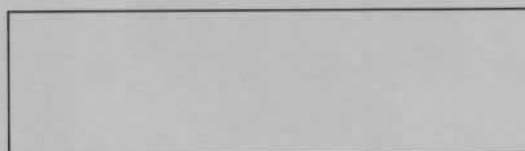
Lyon School

11455 Buno Road, west of Pleasant Valley Road. The 1885 Lyon School is a fully restored one-room schoolhouse and serves as our organization headquarters.

CoBACH Center

202 W. Main Street, in downtown Brighton next to the Millpond. CoBACH is formally known as the City of Brighton, Arts, Culture and History Center. It is located in the historic 1879 two story brick building also known as the Old Town Hall.

RETURN SERVICE REQUESTED



Harvesting Ice In The Brighton Area

When we can fill a glass with perfectly shaped ice cubes at the touch of a finger, we are rarely concerned with how this commodity arrived in our home. This was not always the case.

In the process of building farm buildings in the 19th century, a cold storage facility was often included. Perishable food was kept cold in a cool, dark cellar, placed in containers in nearby springs (if available) or lowered into a well pit. Construction of an onsite icehouse meant having your own supply of ice nearby. This made cold food preservation much easier for the farmer's wife.

This area's many ponds and lakes, after the ice was about 6 inches or more thick, provided a source of the needed commodity. Individual farm owners used various equipment to cut, move and place the ice in their icehouse. A quantity of sawdust or marsh hay, was cut and laid between blocks of ice to prevent them sticking together.

However, ice harvesting was a much larger commercial enterprise than merely for personal use. The majority did not have this kind of access to ice. They depended on ice companies for their supply. Ice companies contracted with distributors in cities with large populations, such as Detroit and Toledo, to supply ice year round. Large blocks of ice, twenty five to fifty pounds and larger, were brought in horse-drawn delivery wagons to the ice box at home.

The Huron River, Worden Lake, Island Lake, Whitmore Lake, Silver Lake, Lime Lake and the millpond in town, all were sources of ice. Most of these were near railroads, often with special sidings, where huge storage facilities were built.

Hundreds of men found winter employment in the cleaning of the lake surface, and the marking, cutting and poling the resultant blocks of ice to a ramp, which carried them up onto plat-

forms where they were pushed and pulled into place. Other men saw to the interlaying of insulation between the blocks.

The ice harvesters were not the only ones earning a wage. Local boarding houses flourished, saloons, restaurants, clothing stores, horse feed dealers, hotels and others benefited from this winter activity. Many found work all summer loading ice into railroad cars for shipment. Refrigeration made possible transportation of fruit and other perishables on the railroad. Railroads had a wider clientele and farmers could diversify their agricultural pursuits.

Ice cut on Worden Lake was delivered to the Eastern House in 1850. The ramp on the west side of the millpond sent ice into the large icehouse on shore. The Beaubian Ice Company, at Island Lake, supplied ice to the National Guard encampment there. In 1890, the Labadie Ice Company had acquired Beaubian; Labadie later sold in 1918. Ice stored in the Peach icehouse on Silver Lake was a popular commodity for local resorters. The Toledo Ice House on the northwest shore of Whitmore Lake, burned down around 1930.

A clipping dated March 16, 1932, reveals local concern after a warm winter. However, though ice on Lime Lake was only six and a half inches thick, Don Leith Sr. of the Brighton Ice Company assured this would be held for emergency use since artificial ice was available. Even with the arrival of artificially made ice in the 19th century (using an ammonia condensing process), the harvesting of less expensive ice from nearby lakes continued until WWII.

Compiled by Marieanna Bair from book "From Settlement to City - Brighton" by Carol McMacken and Yesteryears of Green Oak Township Historical Society. Additions/corrections requested. 810/229-6402.