

Old Village Cemetery - New View To Eastern Boundary



The winter storage crypt facing has been restored to last another century

The Old Village Cemetery continues to receive improvements to its beautiful grounds. The 1837 cemetery is located next to the mill-pond in downtown Brighton. The grounds are sheltered under the canopy of mature trees, which gives all visitors a peaceful experience.

The alley next to Saint Paul's Episcopal Church and Old Village Cemetery is undergoing massive rehabilitation. Brush and overgrowth has been removed and a new wall has been erected along the east property line formerly hidden behind a dilapidated cyclone fence.

A new parking lot is transforming the area previously shrouded in brush and debris for decades. A new ornamental fence will separate the cemetery and parking lot. This fence will be

located above the wall and will match the existing cemetery fence.

In this area are the remnants of an old crypt as evidenced by the cut stone structure protruding from the hillside. During winter and prior to power machinery, bodies were stored here until spring. Access to the crypt room was through this stone facade. A portion of the stonework, which had deteriorated over the years, was restored as part of this project. Visitors will see and appreciate the beautiful work done by stonemasons in the late 1800's. A plaque explaining the former use of the structure and providing information about stonemasonry will be donated.

The BAHS is thrilled to have the east property line of this historic burial ground under-

going rehabilitation. Once completed, this view of Old Village Cemetery can be seen from the new parking lot and from Grand River.

Thank you to the Downtown Development Authority (DDA) and the Planning and Community Development Department of the City of Brighton. A portion of these grant funds will provide improvements to one of the oldest historic landscapes of our community!

Jim Vichich

♦♦♦♦♦

Volunteering

For the BAHS to function, it is necessary for our members to volunteer. Serving on the Board of Directors is a great way to help. Also, you can help with: administration, Lyon School maintenance, CoBACH hosting/display setup, Oral History interviews, photo and document scanning, staffing our Farmers' Market booth, etc.

It is critical that our volunteer core receive support so as to not "burn-out". Only you can determine what you can do to assist. Contact us to learn more.

On Nov 21, we will hold our Annual Membership Meeting. The public is welcome and this is a great opportunity to learn about what we do and how to get involved.

Special points of interest:

THE ORIGIN OF BRIGHTON, FOUNDED AS ORE CREEK, IS DISCUSSED IN THIS MONTH'S HISTORICAL PERSPECTIVE ARTICLE.

SEE PAGE 4

A SCHEDULE OF UPCOMING EVENTS, INCLUDING OUR ANNUAL HALLOWEEN OPEN HOUSE WITH EVENTS FOR CHILDREN.

SEE PAGE 2

"If the past has been an obstacle and a burden, knowledge of the past is the safest and the surest emancipation."

Lord Acton
 (1834 - 1902)

Inside this issue:

RECENT AND FUTURE HAPPENINGS	2
RECOGNITION AND THANKS	2
BAHS GIFT SHOP	3
BAHS LEADERSHIP	3
MORE ABOUT BAHS	3
HISTORICAL PERSPECTIVE	4

Recent and Future Happenings

Dates to Remember - October 2010

Oct 2, 9, 16, 23, 30: 8am-1pm

Farmers' Market, Downtown Brighton at First & Cedar streets

Oct 3, 6, 10, 13, 17, 20, 24, 27: 5pm-8pm

BAHS hosts at CoBACH Center

Oct 7, 14, 21, 28: 9am-4pm

Archiving/Open House at Lyon School

Oct 17: 1pm-4pm

Halloween Open House at Lyon School.
(See article in next column)

Oct 27: 6pm

BAHS board meeting at CoBACH Center

Oct 28: 6-9 pm

Fall Cluster Meeting of Local Historical Societies and Libraries. Howell Carnegie Library. (517) 546-0720

Nov 21: 1pm-4pm

Annual Membership Meeting at Lyon School. Elections and Reports of Officers.

Area Organizations

Oct 7: 7pm

Livingston County Genealogical Society.
rootsweb.com/~milcgs

Oct 10: 2pm

Saline Historical Society: The Dark Side of Saline History Tour. salinehist.org

Oct 10

Waterloo Area Historical Society:
Pioneer Day. waterloofarmmuseum.org

Oct 27: 7:30pm

Salem Area Historical Society: History of Music Boxes. sahistory.org

Halloween Open House at Lyon School

Come join us for Halloween fun. This day's events are especially geared to children of all ages. All children will receive a pumpkin, which they can paint and take home. Cider and donuts will be served. Halloween costumes are optional but encouraged! In addition, there will be early period games and an opportunity to tour the historic Lyon one-room schoolhouse.

Membership Renewal

If you value what we do, what we promote, and the value we deliver in the preservation of local history, your financial support in the form of your membership dues is much needed.

If this Trail Tales is marked *Complimentary Copy*, then your dues have not been paid for this year. Please take time to renew your 2010 membership.

In the future, a review will be done of the number of complimentary copies we distribute. We simply cannot afford to

continue free distribution of Trail Tales due to printing and postage costs.

2011 marks 30 years since the founding of the BAHS. Thanks to our members providing financial, physical and moral support, our mission has been enhanced and strengthened and is the foundation for continued growth in the future.

Help Wanted

The BAHS depends on volunteers who donate time and energy. We currently seek volunteers for the following roles:

- **Director for BAHS Exhibits:** This position entails developing and planning historical exhibits for CoBACH.
- **Archivists:** We desperately need help with the sorting, organizing and scanning of photos, documents, maps, etc.

Historic Archives

The Historic Resource Survey is a source of answers for local researchers. Refining these records is an ongoing process. Our records cover local schools, organizations, businesses, cultural activities, government, the military, and more. Each Thursday morning at Lyon School, our archive volunteers gather to organize our many documents, newspaper clippings, old photos, maps, and the like. Be assured your help would be welcome.

Thanks and Recognition

Thanks to...

The BAHS recognizes the following people for volunteering their time.

- Bert Bair, Ida Bair and Jackie Damm for help with the Trail Tales mailing.
- Sue Garcia, Tom Niemeyer and Anne Strategos for hand delivery of Trail Tales to local businesses.
- Norma Jean Pless for her 2011 membership in Friends of Lyon School. Norma also donated 1890/1950s photos of the Leitz family, a copy of her mother's teaching certificate and 1930/1940s photos of Lyon School students with identifications!
- Don Thomas for help in weed whacking at the Old Village Cemetery.

- Those who helped at Harvest Fest.
- Dr. Harry Davis for local history items including photos of local champion baseball teams of the 1940/50s.
- Allan Keider for photos, memories and history of St. Vincent's Villa 1947-1951, describing buildings and activities.

Memberships

We would like to thank the following members for their annual memberships:

Family

- Steve & Luanne Bibbee (Howell)*
- Steve Flowers*
- Shirley Jenks (Howell)
- Norma Jean Pless (Roscommon)
- Nadine Russell*
- Ralph Steinberger (Howell)*

2010 Business / Professional Members

The support of our professional members is deeply appreciated. We encourage you to support these local businesses.

- Advance Craft Home Builders, Inc.
- Archer-Huntley Financial Services**
- Bagger Dave's Restaurant
- Joe Agius/Burroughs Tavern
- Lawrence Autobody**
- Masonic Lodge #247**
- Patrick Financial Group, LLS**
- Promess**
- The Engravers Journal
- Yum Yum Tree

* Welcome new members

** Special thanks to these Life Members

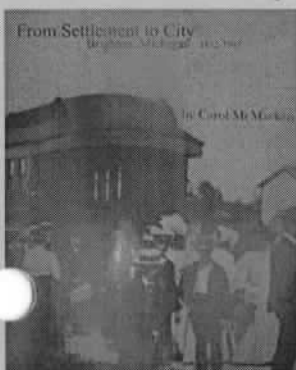
Support BAHS: Become a Member or Donate

The BAHS relies on participation of its members and the generosity of its patrons. If you would like to make a donation or become member, please visit our web site at www.brightonareahistorical.com or mail in the following form below.

Mail check or money order payable to: Brighton Area Historical Society P. O. Box 481 Brighton, MI 48116-0481	Name: _____ Address: _____ City: _____ State: _____ Zip Code: _____ E-Mail: _____	Phone: () _____
Membership Plan:		
<input type="checkbox"/> New	<input type="checkbox"/> Business	<input type="checkbox"/> \$500 Life
<input type="checkbox"/> Renewal	<input type="checkbox"/> Personal	<input type="checkbox"/> \$15 Individual
	<input type="checkbox"/> \$50 Patron	<input type="checkbox"/> \$2 Student
	<input type="checkbox"/> \$25 Family	
Friend of Lyon School:		BAHS Projects Fund:
<input type="checkbox"/> \$10	<input type="checkbox"/> \$100	<input type="checkbox"/> \$10
<input type="checkbox"/> \$25	<input type="checkbox"/> \$250	<input type="checkbox"/> \$100
<input type="checkbox"/> \$50	<input type="checkbox"/> Other \$ _____	<input type="checkbox"/> \$25
		<input type="checkbox"/> \$250
		<input type="checkbox"/> \$50
		<input type="checkbox"/> Other \$ _____

The Brighton Area Historical Society is a 501(c)(3) Non-Profit Organization. All donations are tax deductible.

BAHS Gift Shop



Product Spotlight

From Settlement to City
Brighton, Michigan 1832 - 1945
by Carol McMacken
450+ pages; Over 300 pictures
\$65.00

Description: This large volume hardcover book contains a beautifully detailed history of Brighton from its earliest days until the mid-1940s. It contains over 300 pictures and illustrations.

This item is a must for any book collection on Michigan and its rich history.

The Brighton Area Historical Society maintains an inventory of commemorative and Brighton history memorabilia for sale as fund raisers. 100% of all sales proceeds go to fund our ongoing organization budget needs, including local history projects and Lyon School maintenance.

Our product offering includes home décor (pewter items, afghans and pillows, decorative ceramic tiles, etc.), postcards, craft items, and the like.

To see our full offering, please visit our web site at brightonareahistorical.com.

BAHS Leadership

President

Jim Vichich

Vice President

Marieanna Bair

Secretary

Thomas Reinke

Treasurer

Mindy Kinsey

Directors

Dave Ball

Sue Garcia

Larry Lawrence

Education Liaison

Judith Coebly

Sue Skwarski

Trail Tales Editor

Dave Ball

CoBACH Display Coordinator

Open: Volunteer Needed

BAHS: How to Contact Us or Find Us

If you would like to contact us, please use the following options:

E-Mail:

info@brightonareahistorical.com

Phone:

(810) 250-7276

US Mail:

Brighton Area Historical Society

P. O. Box 481

Brighton, MI 48116-0481

Lyon School

11455 Buno Road, west of Pleasant Valley Road. The 1885 Lyon School is a restored one-room schoolhouse and serves as our headquarters.

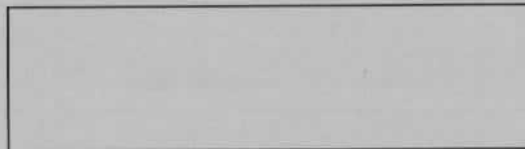
CoBACH Center

202 W. Main Street, in downtown Brighton next to the Millpond. CoBACH is formally known as the City of Brighton, Arts, Culture and History Center. It is located in the historic 1879 two story brick building also known as the Old Town Hall.

The BAHS is a 501(c)(3) non-profit organization. Help us out while also helping yourself with a tax-deductible contribution.

The BAHS accepts monetary support and donations of historical artifacts. Please consider supporting us with your generosity.

RETURN SERVICE REQUESTED



Ore Creek (Part 3)

At the time the Village built the trestle bridge on West Main over Ore Creek in 1871, the marsh and water of the pond extended farther west and north, almost to First Street, as shown on early maps. A blacksmith shop at 314 W. Main and a livery at 324 W. Main stood on pilings with water visible between cracks of the floor. Little by little the wetland was replaced with drier soil. When Brighton State Bank was built at 306 W. Main, in 1911, the fill was extended even further.

Pictures from 1910 show a boardwalk and cyclone fence bordering the edge on the north side of W. Main Street, which was lined with weeping willows. A bandstand was built over the water at the edge of the walk. A conduit had replaced the trestle bridge and W. Main transformed from a trail into a dirt road.

By the mid 1920s, the willows are gone, the cyclone fence still protects pedestrians from the bordering pond, and W. Main became a paved thoroughfare.

The 1930s brought financial difficulties to those living along Ore Creek as well as the entire country. However, the courage of those living along this stream, buoyed by the Brighton Fire Department, conducted Independence Day celebrations featuring parades and fireworks over the pond at dusk. Reflections from the water made it twice as memorable. This annual event gave encouragement to people who needed it. Occasional Home Coming festivities near the flowing water bestowed a feeling of faith and hope for the future, as dim as it seemed at times.

Various activities in support of the troops during WWII, such as scrap metal drives, blackout practices, war bond sales, were held on Main Street by the millpond.

In 1953 the Quakenbush mill at the NW corner of W. North Street and S. West Street was still standing when the dam failed. Ore Creek reverted to being a creek again as it coursed

through the town. The trees in the valley on the south side of Main came crashing down. A new dam was constructed on the north side of Main the following year; much of the labor provided by local businessmen and Fire Department members.

To raise funds and encourage shoppers to patronize downtown businesses, the Kiwanis Club, in March 1959, placed four nickel canisters filled with corn as feed for local wild life (i.e.: ducks) along the cyclone fence. This venture was discontinued in 1976, a victim of its own success. The community gained statewide notoriety for the large brace of ducks which occasionally stopped vehicular traffic while crossing Main.

Millpond Park with trees, grass, swings, etc., was established on the west shore of the pond in 1972. On August 6, the Livingston Community Band performed at 3 p.m. at the park.

A more aesthetically pleasing dam was built nearer the tube, through which the stream flows under Main Street, in 1973. The addition of more fill expanded the area for pedestrian comfort and recreation. The cyclone fence was removed. About that same time a concrete walk and seawall were built providing a pleasant path for relaxation and exercise.

Compiled by Marieanna Bair from the BAHS Historic Resource Survey; clippings; Bill Pless' writings and Carol McMacken's book 'From Settlement to City'. Additions/corrections requested. 810/229-6402.

♦ ♦ ♦ ♦ ♦

In Memorial

The BAHS extends our deepest sympathies to the family of:

Bill and Helen Hyne

Brighton Area Historical Society members
and long time Brighton area residents.